

# NEOWAY N725

## LTE Cat. 4 Module



### Key Benefits

- LTE Cat.4 modules optimized for M2M and vehicle applications.
- Feature refinements: supports GNSS, eCall, Audio, and FOTA.
- Compliant with IATF16949 requirements and follows the automotive-grade quality control process: APQP, FMEA, MSA, SPC, PPAP and other tools.
- Applicable to passenger car, commercial car and two-wheelers, etc.
- Used in most regions including China, EMEA, Latin America and SEA.



### ASR chipset

ASR 1803E



### Operating temperature

-30°C~+75°C



### Multiple dialing methods

PPP/ECM/RNDIS



### LGA package, small size

Reduce product area



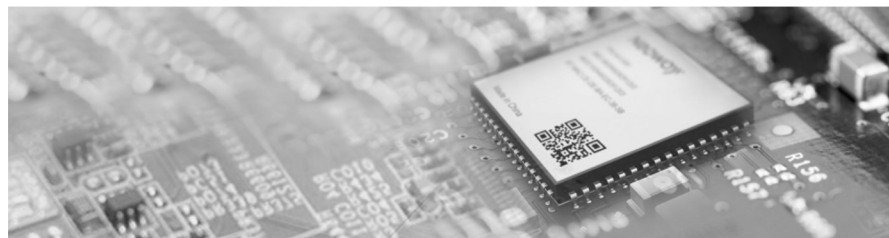
### Technical support

Reference designs, evaluation kits  
Timely support via emails, calls, and instant messages  
Field support

### Product Description

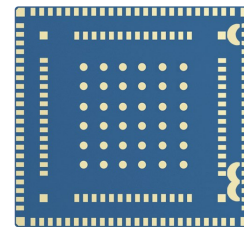
N725 is an LTE Cat 4 module optimized specially for M2M and vehicle applications. Adopting the 3GPP Rel.12 LTE technology, it delivers 150 Mbps downlink and 50 Mbps uplink data rates.

With high speed, ultra wide operating temperature range, N725 has excellent RF performance. A rich set of Internet protocols, industry-standard interfaces, and abundant functionalities (USB serial drivers for Windows 7/8/8.1/10, Linux, Android) extend the applicability of the module. N725 also supports UMTS and GSM networks for application in areas not covered by LTE networks so that it can be used in most regions including China, EMEA, SEA where LTE networks are deployed.



# NEOWAY N725

## LTE Cat 4 module



### Specifications

N725-CN	LTE FDD: B1, B3, B5, B8 LTE TDD: B34, B38, B39, B40, B41 UMTS: B1, B5, B8 GSM/GPRS: 900/1800 MHz
N725-EA	LTE FDD: B1, B3, B5, B7, B8, B20, B28 LTE TDD: B38, B40, B41 UMTS: B1, B5, B8 GSM/GPRS: 900/1800 MHz
Supply voltage	3.4 to 4.2 V (DC), Typ.: 3.8V
Operating temperature	-30°C to +75°C
Dimensions	30.0 mm x 28.0 mm x 2.80 mm (± 0.1 mm)
Package	192 pin LGA
Power consumption	<2.32 mA @Sleep mode <20 mA @Idle mode
Development	OpenWRT 5.4.195
CPU	ARM v7 CPU up to 600 MHz
Memory	RAM: 128 Mb ROM: 256 Mb

### Features

Data rate	FDD-LTE: Max 150 Mbit/s (DL)/Max 50 Mbit/s (UL) TDD-LTE: Max 130 Mbit/s (DL)/Max 30 Mbit/s (UL) UMTS: Max 21 Mbit/s (DL)/Max 5.76 Mbit/s (UL)
SMS	TEXT/PDU Point to Point/Cell Broadcast
Network protocols	TCP/UDP/MQTT/PPP/FTP /HTTP/HTTPS/SSL/TLS
Firmware upgrade	Via USB or FOTA
USB driver	Windows 7/8/8.1/10 Linux 2.6 - 4.4 Android 4.x/5.x/6.x/7.x/8.x
RIL driver	Android 4.x/5.x/6.x/7.x/8.x
RNDIS driver	Windows 7/8/8.1/10
Linux driver	Linux 2.6/3.x/4.1 - 4.4

### Application Interfaces

POWER, PWRKEY\_N, RESET\_N  
USB2.0, UART, PCM, I2C, SPI, SDIO, RGMII  
1.8 V/3.0 V USIM interface  
Cellular antenna interfaces

### Enhanced Features

3G/4G antenna, 50 Ω characteristic impedance  
Three UART interfaces, one of which supports hardware flow control  
One USIM interface, compatible with 1.8 V/3 V USIM cards  
One USB2.0 high-speed interface  
One SPI interface  
One I2C interface  
One RGMII interface  
Firmware Over-the-Air (FOTA)

### Certification Approvals

CCC, CTA, SRRC, RoHS, CE

\* indicates under development